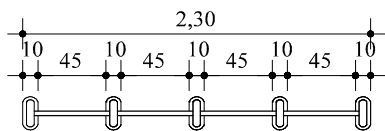
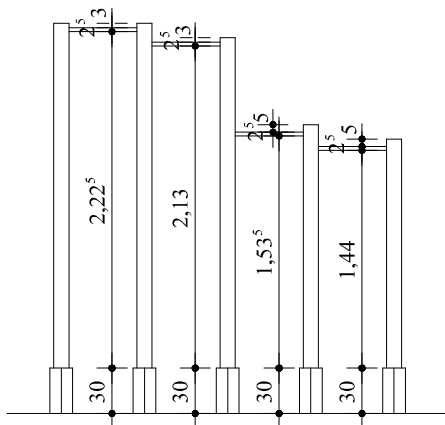


DETALHE DOS EQUIPAMENTOS

①

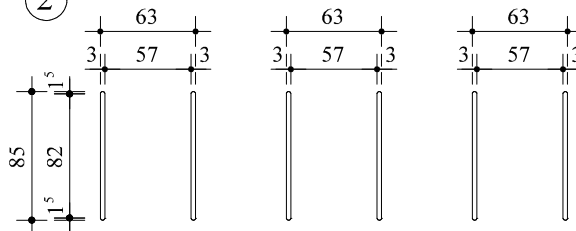


BARRAS FIXAS
 VISTA SUPERIOR
 Escala 1/50

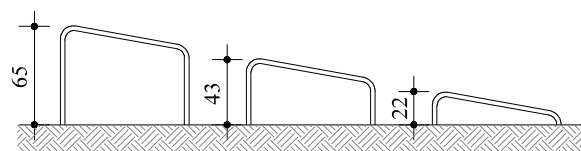


BARRAS FIXAS
 VISTA LATERAL
 Escala 1/50

②

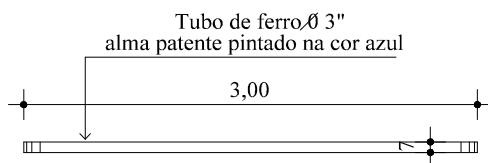


MARINHEIRO
 VISTA SUPERIOR
 Escala 1/50

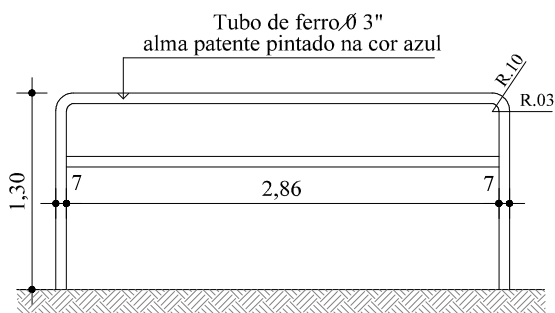


MARINHEIRO
 VISTA LATERAL
 Escala 1/50

③



BARRAS PARALELAS
 VISTA SUPERIOR
 Escala 1/50



BARRAS PARALELAS
 ELEVACÃO
 Escala 1/50

RESP. TÉCN.:

JOSÉ ADOLFO CASTRO
 ENGº CIVIL - CREA 59.688

PROPRIETÁRIO:

 PREFEITURA MUNICIPAL DE BARÃO DO TRIUNFO